

an adult female holding an adult of the chrysomelid beetle, *Trirhabda* sp., June 2, 1941: same, an adult male sucking on an adult of the braconid, *Rogas* sp.; taken June 8, 1941, at light, by J. S. Slater: same, an adult with a half-grown larva of the chrysomelid beetle, *Trirhabda adela* Blake, impaled on its stylets, June 1942: W. K. Bingman, collector.

REFERENCES

- CLAUSEN, C. P. 1940. Entomophagous Insects, *McGraw-Hill*, 688 pp.
- FROST, C. A. 1913. Peculiar habits of small Diptera, *Desmometopa latipes* Meig., *Psyche*, 20: 37.
- KNAB, F. 1915. Commensalism in *Desmometopa*, *Proc. Ent. Soc. Wash.*, 17: 117-121.
- PEYERIMHOFF, P. DE. 1917. Phoresie et commensalisme chez les *Desmometopa*, *Bul. Ent. Soc. Fr.*, 1917, 215-218.

A New *Polydesmus* from Missouri and Oklahoma (Diplopoda).

By RALPH V. CHAMBERLIN, University of Utah,
Salt Lake City.

The specimens upon which the new species of *Polydesmus* here described is based were collected by Leslie Hubricht in March and April of 1936. These specimens, with the exception of paratypes deposited in the Academy of Natural Sciences of Philadelphia, are retained in the author's collection.

Polydesmus hubrichti new species.

General color of the dorsum brown, with the legs lighter and the antennae darker.

On the typical tergites the usual two series of well-defined tubercles back of the transverse sulcus, typically six tubercles in each series which extend between bases of the keels. Tubercles in front of sulcus not distinctly separated. Basal area of keels moderately swollen or convex, smooth. The serrations of the keels are sharply defined on anterior tergites but else-

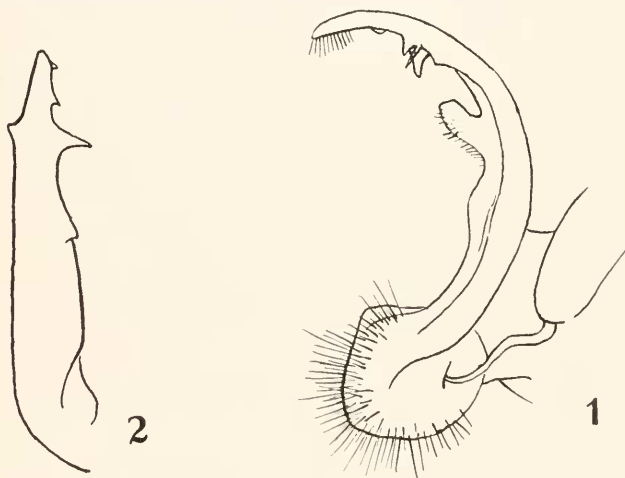
where are weak and on posterior segments almost obliterated; there are two lateral serrations behind that at anterior corner on the non-poriferous keels, three on the poriferous.

Best distinguished by the details of the gonopods of the male which are represented by the accompanying drawings.

Length, up to 17 mm.; width, to 2.7 mm.

Localities—MISSOURI: St. Louis County, University City, March 29, 1936, about 12 specimens, including ♂ holotype, ♀ allotype and ♂ and ♀ paratypes. 4.3 miles northwest of Glencoe Station, March, 1936, one ♀. Creve Coeur Lake Park, March 8, 1936, eight ♂ and ♀ specimens.

OKLAHOMA: Murray County, Arbuckle Mountains, near Latimer County, 2 miles east of Gowen, April 26, 1936, three ♂ and ♀ specimens.



Polydesmus hubrichti sp. n. 1. Right gonopod of male, mesal view. 2. Distal view of blade of same.

Insect Types in the Museum of Comparative Zoology, Harvard College.

The reports by Messrs. Banks and Carpenter in the Annual Report of the Director for 1941-'42 give the types of recent insects catalogued as 25,953 and of fossil insects (holotypes and cotypes) as 1376 species.